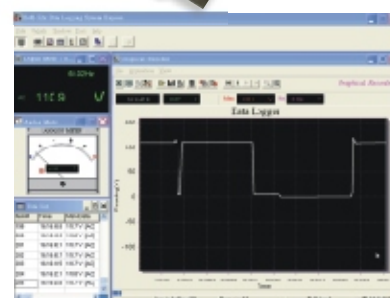




BM869s



BM867s



**BU-86X Interface Kit
(Optional Purchase)**

869s	867s	FUNCTIONS & FEATURES
●	●	5-4/5 Digits 500,000 Counts Large Easy To Read LCD Display
●	●	Fast Measurements, 5/Sec; Fully Auto-Ranging
●	●	Dual Digital Display
●	●	41 Segment Analog Bar-graph Updates 60/Sec
●	●	Optional Purchase USB Cable & Software For Win98/2k/xp/Vista/7/8
●	●	Intelligent Auto Power Off (I-APO) Resets On Significant Operation & Readings
●	●	Data Hold
●	●	Relative Zero Mode
●	●	Audible & Visible BeepJack™ Input Warning Against Improper Plug In
●	●	AC, AC+DC True RMS Conversion
●	●	100kHz AC, AC+DC Voltage Bandwidth
●	0.03%	0.02% High Basic DCV Accuracy
●		VFD-V & VFD-Hz Measures Fundamental V & Hz Of Most Variable Frequency Drives
●		T1-T2 Dual Type-K Temperature -50°C To 1000°C; Selectable °F Readings
●	●	Record Max/Min Readings; Calculates Average Reading over time; Auto-Ranging
●	●	Crest (Instantaneous Peak Hold) Max/Min Readings, Auto-Ranging
●	●	Paper-White Back-Lighted Large Easy To Read LCD Display
●	●	dBm Readings, 20 Selectable Impedance Values
●	●	DCV 0.001mV To 1000V
●	●	ACV 0.01mV To 1000V
●	●	AC+DCV 0.01mV To 1000V
●	●	DCA 0.01μA To 10A; 20A For 30 Seconds Per 5 Minutes Cooling
●	●	ACA 0.01μA To 10A; 20A For 30 Seconds Per 5 Minutes Cooling
●	●	AC+DCA 0.01μA To 10A; 20A For 30 Seconds Per 5 Minutes Cooling
●	●	Ohms 0.01Ω To 50MΩ
●	●	Conductance 0.01nS To 99.99nS
●	●	X-Speed Capacitance 50.00nF To 25mF
●	●	Line Level Frequency 10Hz To 200kHz
●	●	Logic Level Frequency 5Hz To 1MHz
●	●	Logic Level Duty Cycle Readings 0.1% To 99.99%
●	●	Diode Tester
●	●	Rugged Fire Retarded Casing With Battery Access Door
●	●	Replaceable Protective Holster With Probe-Holders & Tilt-Stand
●	●	Optional Purchase Magnetic Hanger
●	●	1000V General (Ohm, Capacitance ... etc.) Input Protection
●	●	1000V High Breaking Capacity Fuses Protected On Current Inputs
●	●	Transient Protection Up To 12kV 1.2/50μs Lightning Surge
●	●	LVD Meets EN61010-1/61010-2-030/61010-2-033 to CAT IV 1000V
●	●	EMC EN61326-1 (EN55022, EN61000-3-2/-3 & EN61000-4-2/-3/-4/-5/-6/-8/-11)