



### 1.0 INFORMATION

<b>Description:</b>	Programmable Espresso maker with power save mode, integrated conical burr grinder with bean hopper (auto sealing to securely hold beans in hopper), grind size selector and dose adjust dial. Programmable coffee dose button: select between single cup and double cup. It has Integrated / removable tamper, cup-warming tray, 15 bar pump, fits extra-large cup height for coffee mugs, electronic temperature control and pressure gauge. Advanced dual wall and single wall filters. Cleaning indicator, filter holder with extended outlets. Swivel steam wand and stainless steel frothing attachment, removable 2.5 litre water tank. Removable wet and dry coffee separator drip trays and drip tray full indicator		
<b>Colour:</b>	Brushed stainless steel		
<b>Voltage:</b>	<b>AU/NZ</b>	<b>BES860 - 230-240V 50Hz 1450W</b>	<b>First Sale Date: 18/02/2009</b>
	<b>CANADA</b>	<b>BREBES860XL – 120V 60Hz W</b>	<b>First Sale Date:</b>
	<b>US</b>	<b>BES860XL – 120V 60Hz W</b>	<b>First Sale Date:</b>
<b>Services:</b>	<p><b>English:</b> Parts are available as per Spare Parts listing. Availability of parts may vary depending on the country where the product is sold. Whilst the diagram may show all parts – parts available for a particular country may differ.</p> <p><b>French:</b> Les pièces sont disponibles selon la liste des pièces de rechange. La disponibilité des pièces peuvent changer selon le pays où le produit est vendu. Tandis que les diagrammes montre toutes les pièces disponibles, mais celles-ci peut différer pour un pays particulier.</p> <p><b>Spanish:</b> Las partes de repuesto son disponibles al correspondido de la lista de partes de repuesto. Las partes disponible pueden diferenciar con acuerdo del país donde el producto sea vendido. Durante el diagrama demuestre que las partes de repuesto son disponibles, pero partes disponibles para un país en particular pueden ser diferentes.</p>		

## 2.0 Spare Parts Listing

NO	CANADA	US	AU/NZ	DESCRIPTION	SUBS. ITEM
01.15	BPBES86001.15	BES860XL/01.15	BES860/01.15	BASE COVER with kapton tape	
01.17	BPBES86001.17	BES860XL/01.17	BES860/01.17	FOOT BRACKET L	
01.18	BPBES86001.18	BES860XL/01.18	BES860/01.18	FOOT BRACKET R	
01.19	BPBES86001.19	BES860XL/01.19	BES860/01.19	FRONT LEFT FOOT	
01.20	BPBES86001.20	BES860XL/01.20	BES860/01.20	FRONT RIGHT FOOT	
01.21	BPBES86001.21	BES860XL/01.21	BES860/01.21	REAR LEFT FOOT	
01.22	BPBES86001.22	BES860XL/01.22	BES860/01.22	REAR RIGHT FOOT	
01.9	BPBES86001.9	BES860XL/01.9	BES860/01.9	ACTUATOR SWITCH – GRINDER	BES860/18.3
01.9A	BPBES86001.9A	BES860XL/01.9A	BES860/01.9A	ACTUATOR SWITCH – GRINDER – QUICK CONNECT	
01.9B	BPBES86001.9B	BES860XL/01.9B	BES860/01.9B	ACTUATOR SWITCH- GRIND & WIRE ASSY	
02.18	BPBES86002.18	BES860XL/02.18	BES860/02.18	WATER FILTER ASSY – PRE TANK	
02.2	BPBES86002.2	BES860XL/02.2	BES860/02.2	SHOWER HEAD	
02.22	BPBES86002.22	BES860XL/02.22	BES860/02.22	DIFFUSER ASSEMBLY	
02.28	BPBES86002.28	BES860XL/02.28	BES860/02.28	PUMP INLET TUBE SILICONE	
02.3	BPBES86002.3	BES860XL/02.3	BES860/02.3	THERMAL BLOCK COLLAR	
02.30	BPBES86002.30	BES860XL/02.30	BES860/02.30	TUBE SILICONE DIFF TO WAND	
02.31	BPBES86002.31	BES860XL/02.31	BES860/02.31	TUBE SILICONE DIFFUS SOLEN	
02.32	BPBES86002.32	BES860XL/02.32	BES860/02.32	TUBE SILICONE DIFFUS SAFE VALVE	
02.33	BPBES86002.33	BES860XL/02.33	BES860/02.33	TUBE SILICONE FLOW METER-WATER FILTER	
02.34	BPBES86002.34	BES860XL/02.34	BES860/02.34	TEFLON TUBE MED SOLE THERMOBLK	
02.35	BPBES86002.35	BES860XL/02.35	BES860/02.35	TEFLON TUBE LONG SOLE SAFE VALVE	
02.36	BPBES86002.36	BES860XL/02.36	BES860/02.36	TEFLON TUBE SHORT SOLE THERMOBLK	
02.41	BPBES86002.41	BES860XL/02.41	BES860/02.41	FLOW METER	
02.6	BPBES86002.6	BES860XL/02.6	BES860/02.6	STEAM RING – SHOWER HEAD	
02.7	BPBES86002.7	BES860XL/02.7	BES860/02.7	STEAM FILTER – SHOWER HEAD	
02.8	BPBES86002.8	BES860XL/02.8	BES860/02.8	SCREW FOR STEAM FILTER	
03.17	BPBES86003.17	BES860XL/03.17	BES860/03.17	GRINDER DOSE DIAL KNOB	
03.9	BPBES86003.9	BES860XL/03.9	BES860/03.9	PRESSURE GAUGE ASSEMBLY	
04.1	BPBES86004.1	BES860XL/04.1	BES860/04.1	SELECTOR VALVE ASSEMBLY	
04.10	BPBES86004.10	BES860XL/04.10	BES860/04.10	MICROSWITCH – SELECTOR VALVE	BES860/04.10A
04.10A	BPBES86004.10A	BES860XL/04.10A	BES860/04.10A	MICROSWITCH – SELECTOR VALVE – QUICK CONNECT	
04.10B	BPBES86004.10B	BES860XL/04.10B	BES860/04.10B	MICROSWITCH-SELECT VALVE & WIRES	
04.27	BPBES86004.27	BES860XL/04.27	BES860/04.27	FROTHING WAND COMPLETE ASSY	
04.27A	BPBES86004.27A	BES860XL/04.27A	BES860/04.27A	FROTHING WAND COMPLETE ASSY – STAINLESS STEEL	
04.28	BPBES86004.28	BES860XL/04.28	BES860/04.28	FROTH ENHANCER	
04.29	BPBES86004.29	BES860XL/04.29	BES860/04.29	FROTHING SPOUT WITH O RING	
04.29A	BPBES86004.29A	BES860XL/04.29A	BES860/04.29A	FROTHING SPOUT WITH O RING – STAINLESS STEEL	
05	BPBES86005	BES860XL/05	BES860/05	BEAN HOPPER COMPLETE ASSEMBLY	
05.3	BPBES86005.3	BES860XL/05.3	BES860/05.3	BEAN HOPPER LID	
05.4	BPBES86005.4	BES860XL/05.4	BES860/05.4	BEAN HOPPER KNOB	
06	BPBES86006	BES860XL/06	BES860/06	GRINDER COMPLETE ASSEMBLY	BES860/06A
06A	BPBES86006A	BES860XL/06A	BES860/06A	GRINDER COMPLETE ASSEMBLY – THREAD PITCH CHANGED	
06.11	BPBES86006.11	BES860XL/06.11	BES860/06.11	HANDLE ASSEMBLY FOR OUTER BURR	
06.15	BPBES86006.15	BES860XL/06.15	BES860/06.15	O RING FOR OUTER BURR BRACKET	
06.37	BPBES86006.37	BES860XL/06.37	BES860/06.37	SEAL FOR UPPER CONICAL BURR	
06.37A	BPBES86006.37A	BES860XL/06.37A	BES860/06.37A	SEAL FOR UPPER CONICAL BURR	
06.5	BPBES86006.5	BES860XL/06.5	BES860/06.5	ADJUST GEAR	

NO	CANADA	US	AU/NZ	DESCRIPTION	SUBS. ITEM
06.5A	BPBES86006.5A	BES860XL/06.5A	BES860/06.5A	ADJUST GEAR – THREAD PITCH CHANGED	
06.6	BPBES86006.6	BES860XL/06.6	BES860/06.6	ADJUST GEAR RING	
06.6A	BPBES86006.6A	BES860XL/06.6A	BES860/06.6A	ADJUST GEAR RING	
06.7	BPBES86006.7	BES860XL/06.7	BES860/06.7	UPPER BURR BRACKET	
06.7A	BPBES86006.7A	BES860XL/06.7A	BES860/06.7A	UPPER BURR BRACKET – NEW CONSTRUCTION	
06.8	BPBES86006.8	BES860XL/06.8	BES860/06.8	OUTER BURR ASSY WITH HANDLE	
07.1	BPBES86007.1	BES860XL/07.1	BES860/07.1	TOP COVER	
07.1A	BPBES86007.1A	BES860XL/07.1A	BES860/07.1A	TOP COVER – NEW TYPE	
07.9	BPBES86007.9	BES860XL/07.9	BES860/07.9	MICROSWITCH – BEAN HOPPER	
07.9A	BPBES86007.9A	BES860XL/07.9A	BES860/07.9A	MICROSWITCH – BEAN HOPPER – <b>QUICK CONNECT</b>	
08	BPBES86008	BES860XL/08	BES860/08	WATER TANK ASSEMBLY	
08.12	BPBES86008.12	BES860XL/08.12	BES860/08.12	OBLONG FILTER HANDLE ASSY	
08.13	BPBES86008.13	BES860XL/08.13	BES860/08.13	FILTER – WATER TANK	
08.15	BPBES86008.15	BES860XL/08.15	BES860/08.15	OBLONG FILTER HOLDER ASSEMBLY	
08.9	BPBES86008.9	BES860XL/08.9	BES860/08.9	WATER INLET SEAL	
09.1	BPBES86009.1	BES860XL/09.1	BES860/09.1	DRIP TRAY & COVER ASSEMBLY	
09.5	BPBES86009.5	BES860XL/09.5	BES860/09.5	DRIP TRAY GRILLE	
09.6	BPBES86009.6	BES860XL/09.6	N/A	GRILLE RUBBER GROMMET	
10	BPBES86010	BES860XL/10	BES860/10	FILTER HOLDER & HANDLE ASSY-OLD	BES860/10A
10A	BPBES86010A	BES860XL/10A	BES860/10A	FILTER HOLDER & HANDLE ASSY – <b>STAINLESS STEEL</b>	
10.1	BPBES86010.1	BES860XL/10.1	BES860/10.1	FILTER HOLDER SPRING	
10.1A	BPBES86010.1A	BES860XL/10.1A	BES860/10.1A	FILTER HOLDER SPRING – <b>STAINLESS STEEL</b>	
11.1	BPBES86011.1	BES860XL/11.1	BES860/11.1	TAMPER ASSEMBLY	
11.2	BPBES86011.2	BES860XL/11.2	BES860/11.2	CLEANING DISC	
11.3	BPBES86011.3	BES860XL/11.3	BES860/11.3	SINGLE WALL FILTER-SINGLE CUP	
11.31	BPBES86011.31	BES860XL/11.31	BES860/11.31	DUAL WALL FILTER-SINGLE CUP	
11.4	BPBES86011.4	BES860XL/11.4	BES860/11.4	SINGLE WALL FILTER-DOUBLE CUP	
11.41	BPBES86011.41	BES860XL/11.41	BES860/11.41	DUAL WALL FILTER-DOUBLE CUP	
11.5	BPBES86011.5	BES860XL/11.5	BES860/11.5	STORAGE TRAY	
11.6	BPBES86011.6	BES860XL/11.6	BES860/11.6	HEXAGON-ALLEN KEY – TOOL	
11.7	BPBES86011.7	BES860XL/11.7	BES860/11.7	CLEANING TOOL	
11.81	BPBES86011.81	BES860XL/11.81	BES860/11.81	COFFEE SPOON	
11.82	BPBES86011.82	BES860XL/11.82	BES860/11.82	CLEANING BRUSH – OLD	
11.82A	BPBES86011.82A	BES860XL/11.82A	BES860/11.82A	CLEANING BRUSH	
11.9	BPBES86011.9	BES860XL/11.9	BES860/11.9	FROTHING JUG	
12.10	BPBES86012.10	BES860XL/12.10	BES860/12.10	TEFLON TUBE-SOLENOID TO WAND	
12.11	BPBES86012.11	BES860XL/12.11	BES860/12.11	TEFLON TUBE-TO PRESSURE GAUGE	
12.12	BPBES86012.12	BES860XL/12.12	BES860/12.12	SILICONE TUBE-WATER FILTER-TANK	
12.3	BPBES86012.3	BES860XL/12.3	BES860/12.3	STEAM WAND HANDLE	
12.4	BPBES86012.4	BES860XL/12.4	BES860/12.4	GRIND ADJUST DIAL – PRINTED	
12.5	BPBES86012.5	BES860XL/12.5	BES860/12.5	STEAM SELECTOR DIAL	
14	BPBES86014	BES860XL/14	BES860/14	SOLENOID VALVE ASSY	
14.77	TBA	TBA	BES860/14.77	SOLENOID VALVE CONNECTOR KIT	
14.8	BPBES86014.8	BES860XL/14.8	BES860/14.8	SOLENOID VALVE-OLAB 5878	
14.9	BPBES86014.9	BES860XL/14.9	BES860/14.9	SOLENOID VALVE-OLAB 9200H	
17	BPBES86017	BES860XL/17	BES860/17	SAFETY VALVE	
18.1	BPBES86018.1	BES860XL/18.1	BES860/18.1	PCB ASSEMBLY-LEFT-GRINDER	BES860/18.3
18.1A	BPBES86018.1A	BES860XL/18.1A	BES860/18.1A	PCB ASSEMBLY-LEFT-GRINDER – <b>QUICK CONNECT</b>	
18.1B	BPBES86018.1B	BES860XL/18.1B	BES860/18.1B	PCB ASSEMBLY-LEFT-GRINDER + <b>CABLES</b>	

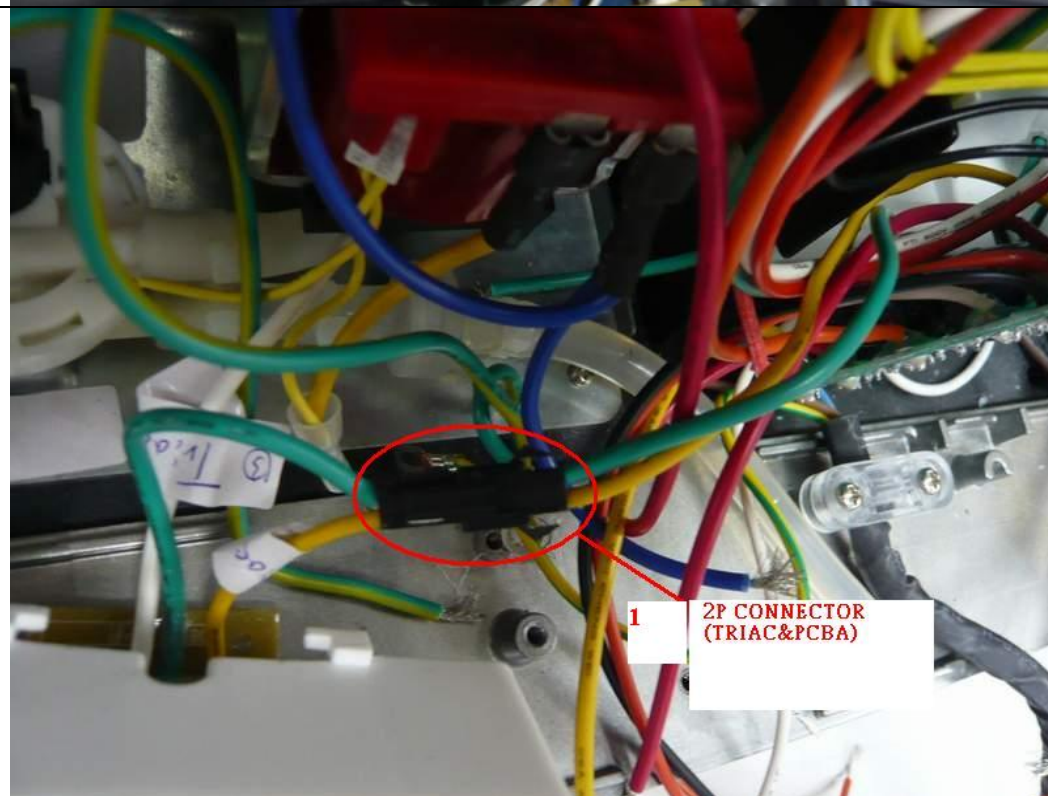
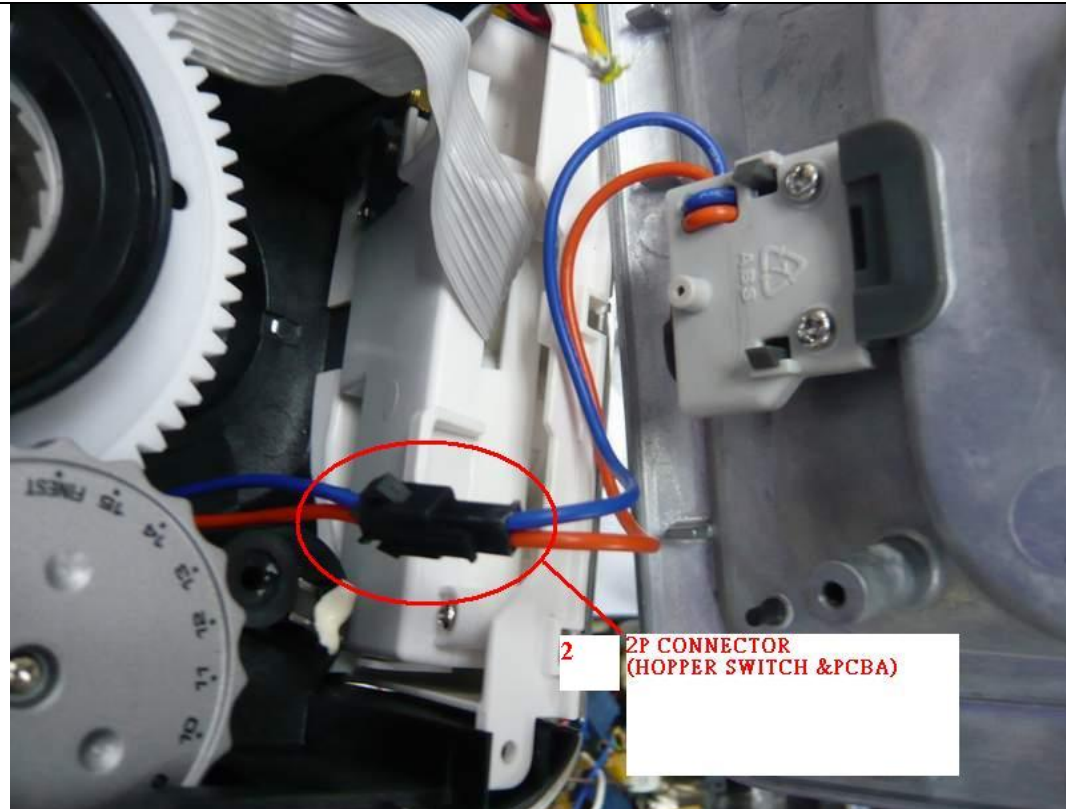
NO	CANADA	US	AU/NZ	DESCRIPTION	SUBS. ITEM
18.2	BPBES86018.2	BES860XL/18.2	BES860/18.2	PCB ASSEMBLY-RIGHT-COFFEE DOSE	BES860/18.3
18.2A	BPBES86018.2A	BES860XL/18.2A	BES860/18.2A	PCB ASSEMBLY-RIGHT-COFFEE DOSE – <b>QUICK CONNECT</b>	
18.2B	BPBES86018.2B	BES860XL/18.2B	BES860/18.2B	PCB ASSEMBLY-RIGHT-COFFEE DOSE + <b>CABLES</b>	
18.3	BPBES86018.3	BES860XL/18.3	BES860/18.3	PCBS-SWITCHES-WIRES FULL ASSEMBLY	NLA – AU/NZ
18.3A	BPBES86018.3A	BES860XL/18.3A	BES860/18.3A	MAIN PCB – <b>QUICK CONNECT</b>	
18.3B	BPBES86018.3B	BES860XL/18.3B	BES860/18.3B	MAIN PCB COMPLETE <b>WITH CABLES</b>	
18.4A	BPBES86018.4A	BES860XL/18.4A	BES860/18.4A	TRIAC PCB – <b>QUICK CONNECT</b>	
18.4B	BPBES86018.4B	BES860XL/18.4B	BES860/18.4B	TRIAC PCB – NEW DESIGN	
19	BPBES86019	BES860XL/19	BES860/19	PUMP	
19.1	BPBES86019.1	BES860XL/19.1	BES860/19.1	THERMAL PROTECTOR - PUMP	
25	BPBES86025	BES860XL/25	BES860/25	THERMOCOIL COMP ASSEMBLY	
25.2	BPBES86025.2	BES860XL/25.2	BES860/25.2	THERMOSTAT	
25.3	BPBES86025.3	BES860XL/25.3	BES860/25.3	THERMISTER ASSEMBLY	
25.3A	BPBES86025.3A	BES860XL/25.3A	BES860/25.3A	THERMISTER ASSEMBLY – <b>QUICK CONNECT</b>	
25.6	BPBES86025.6	BES860XL/25.6	BES860/25.6	THERMAL FUSE	
25.8	BPBES86025.8	BES860XL/25.8	BES860/25.8	O-RING FOR THERMOCOIL	
89	N/A	N/A	BES860/89	CLEANING KIT	
89	BPBES86089	BES860XL/89	N/A	CLEANING TABLETS	BEC250 AU/NZ
89N	BPBES86089N	BES860XL/89N	N/A	CLEANING KIT COMPLETE	
90	BPBES86090	BES860XL/90	BES860/90	INSTRUCTION BOOK	

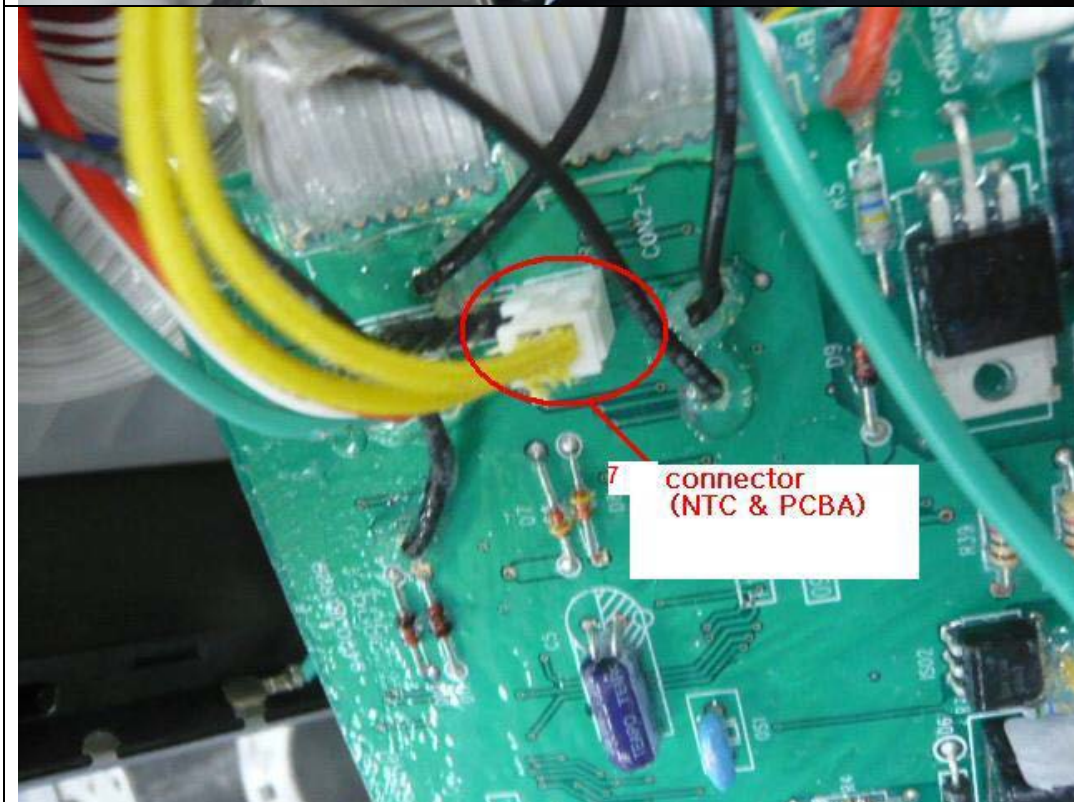
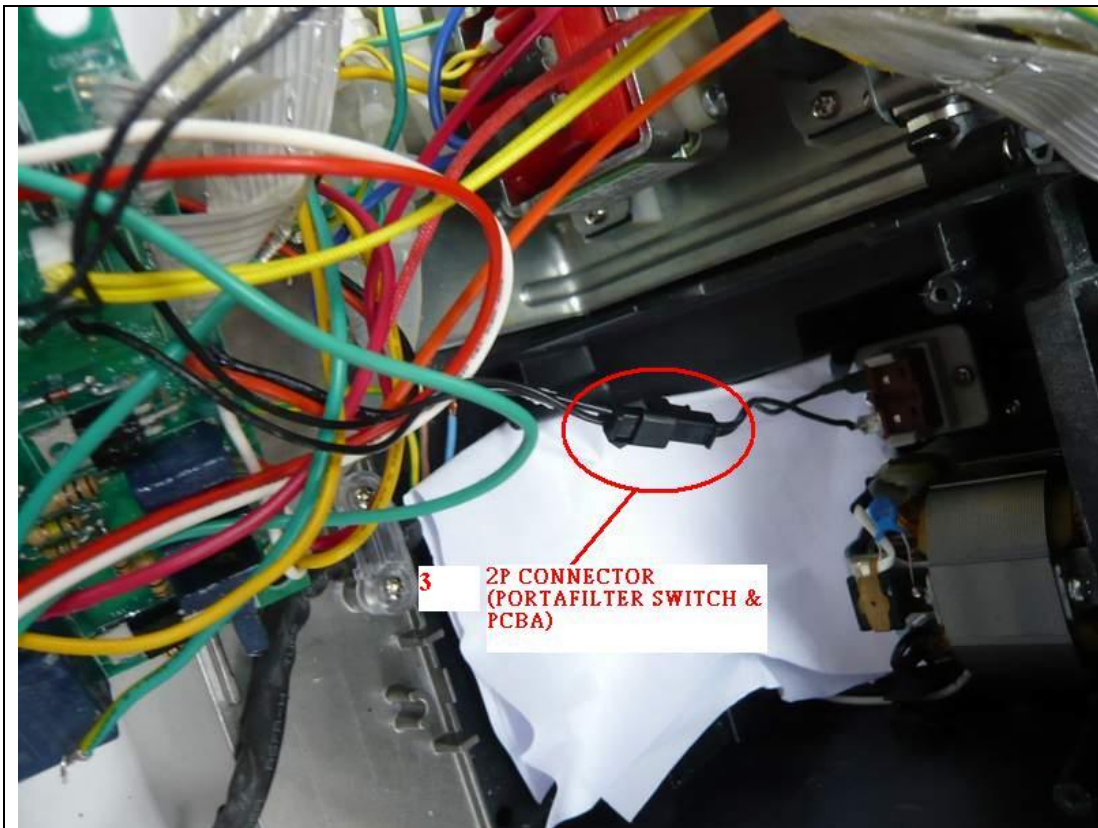
### Service Notes:

Please note that all BES860 units have to be plugged into an ammeter to check for correct Triac operation. There should be negligible current drawn. If it draws 3 - 4amps than the Triac is leaking and Triac PCB should be replaced.

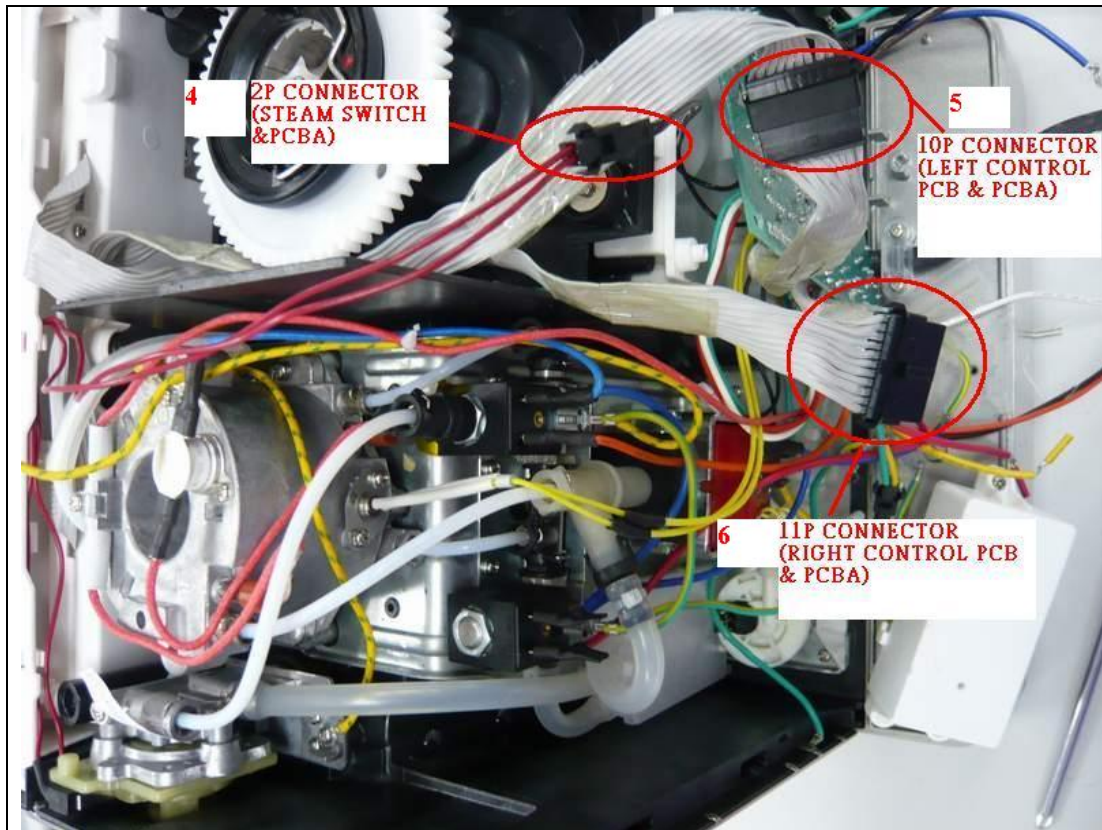


**BES860 Version A parts – PCB with Quick Connectors**



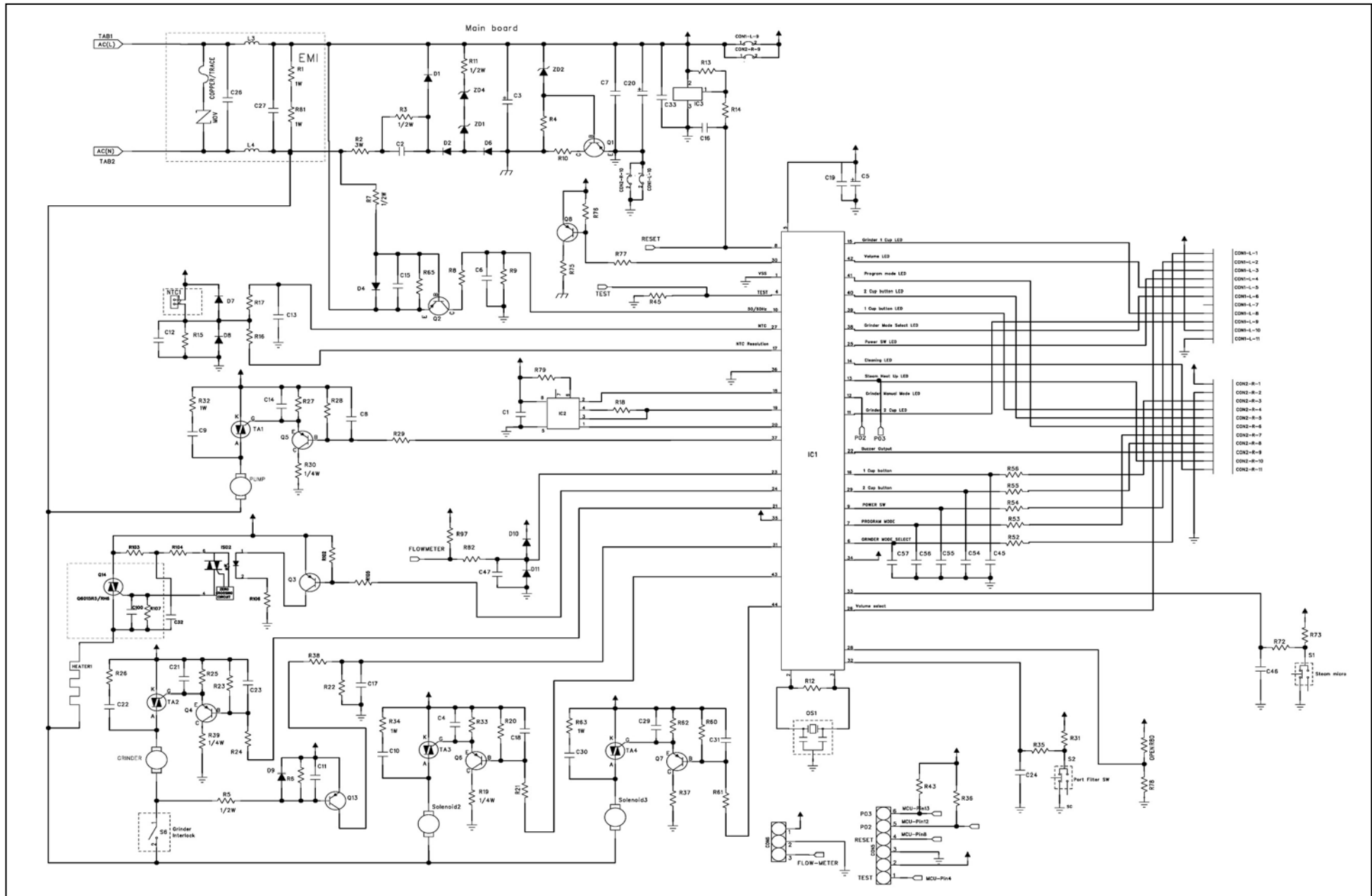






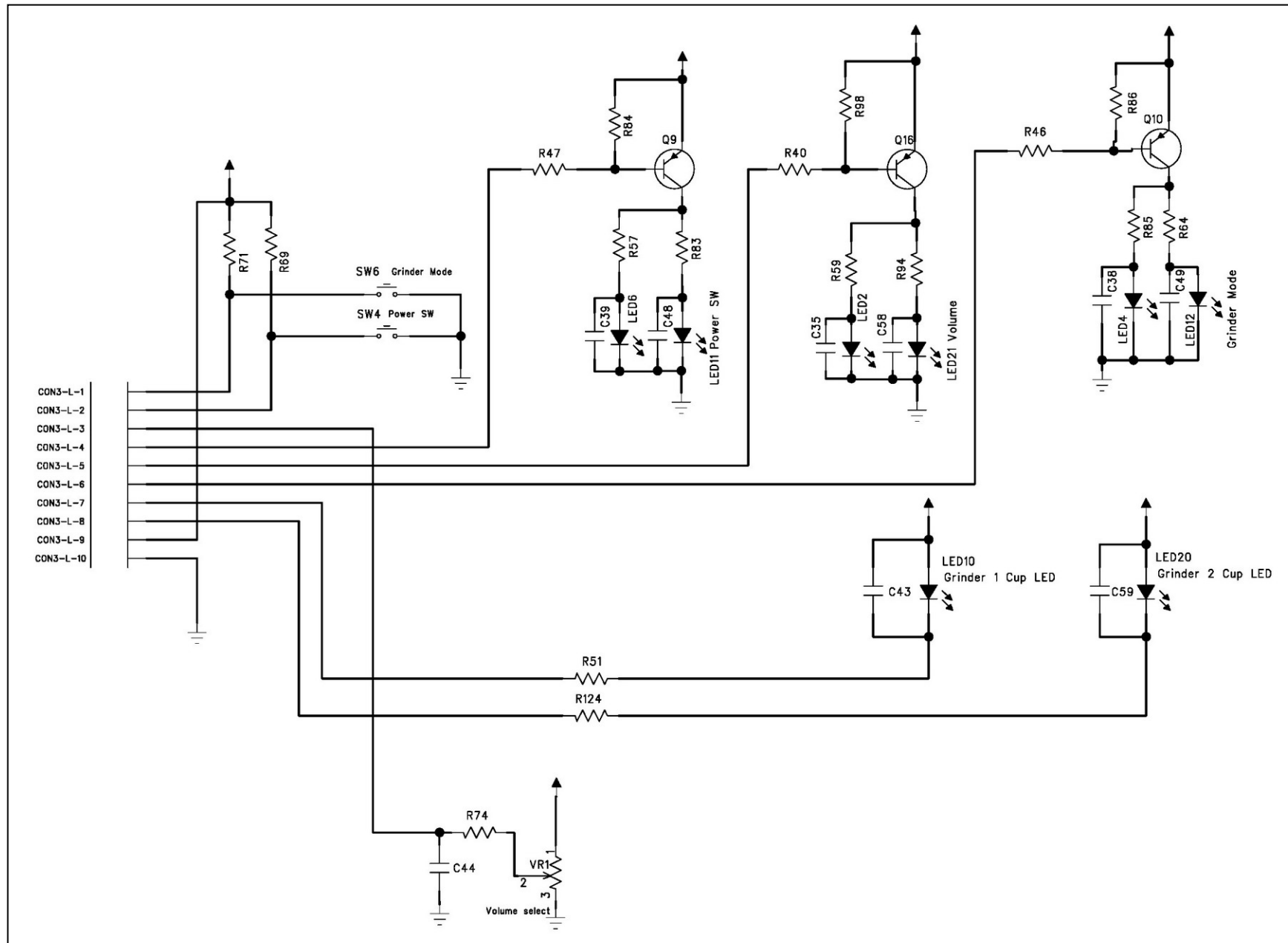
### 3.0 Circuit Diagram Page 1 of 3

#### 3.1 (Main PCB)

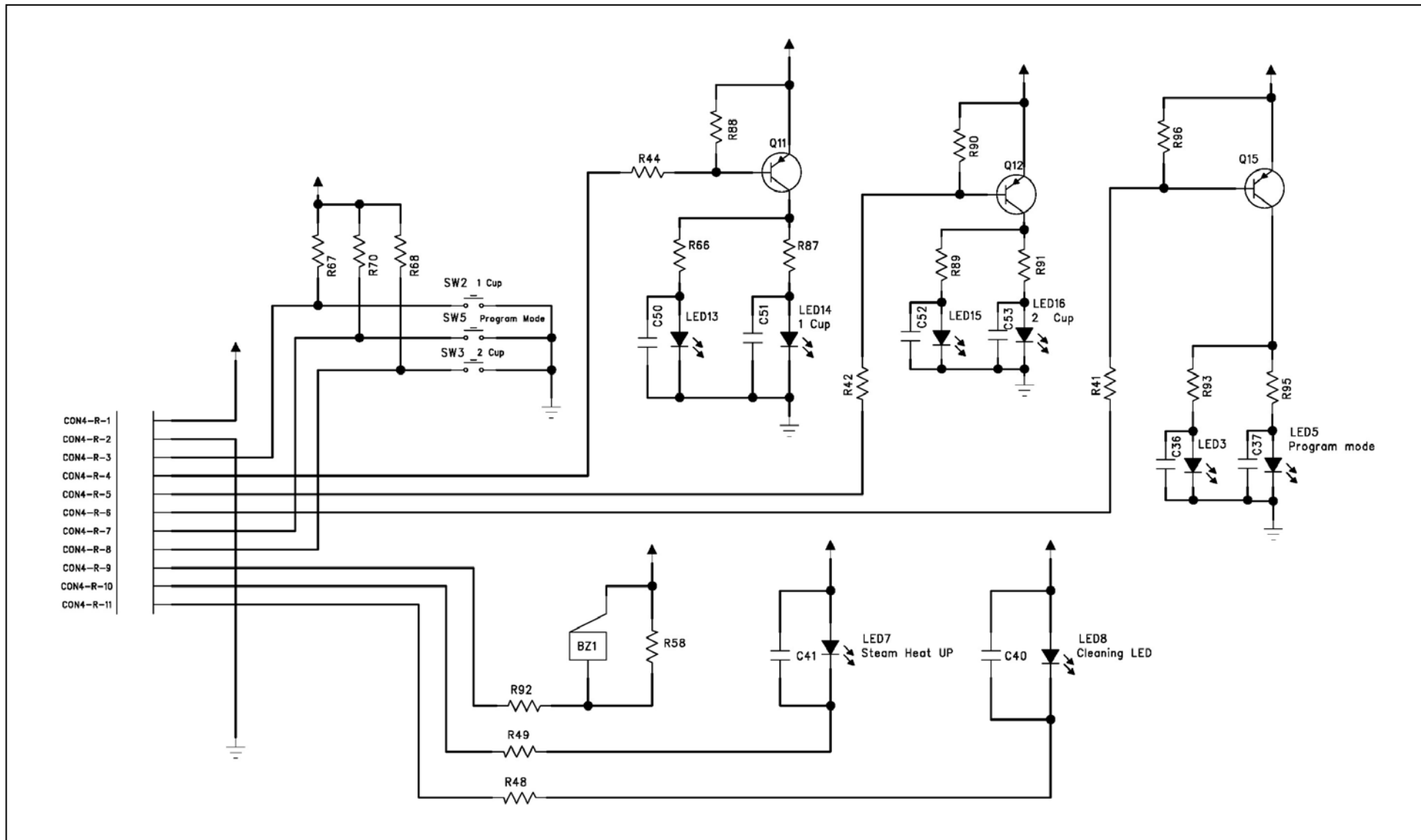


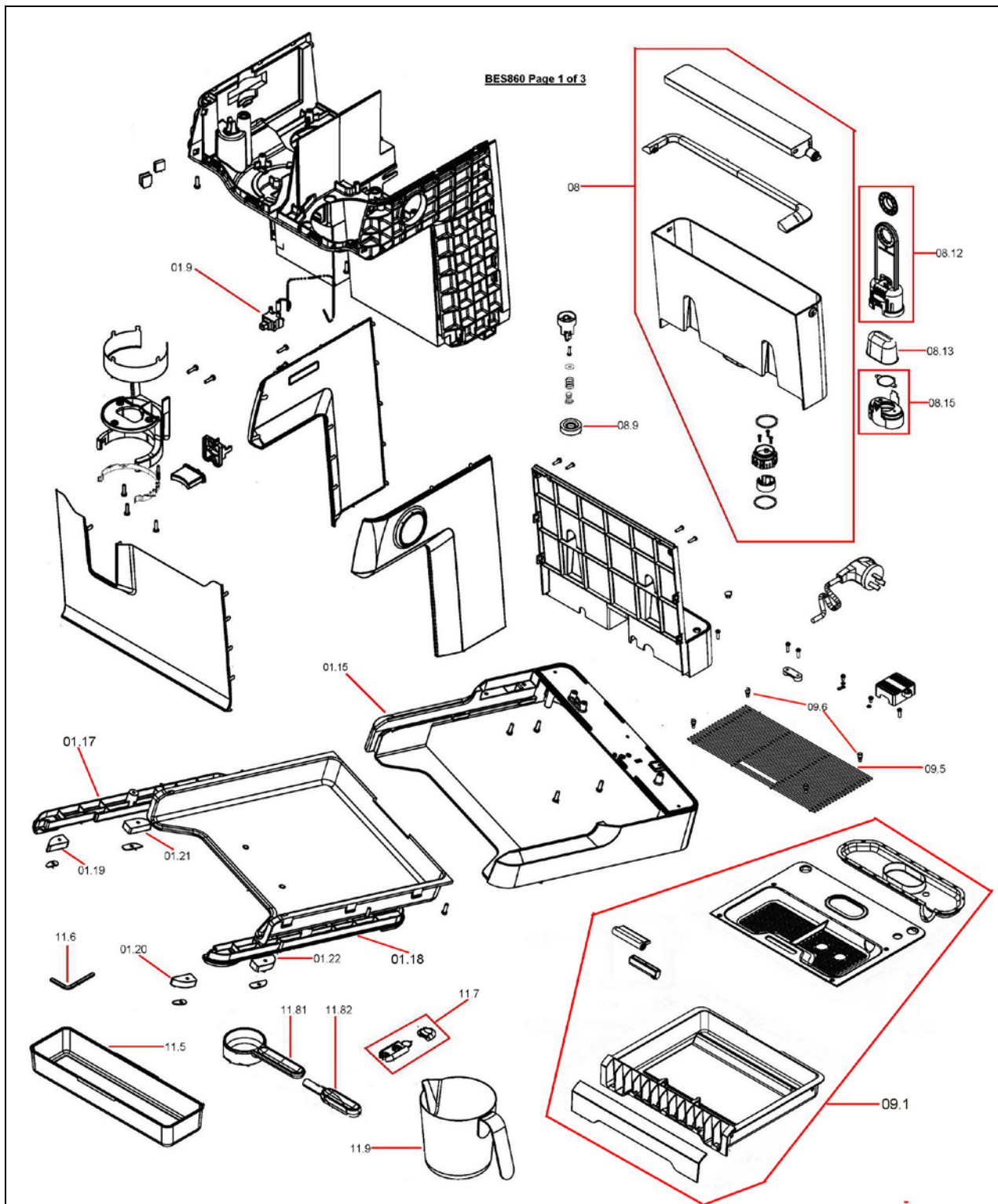


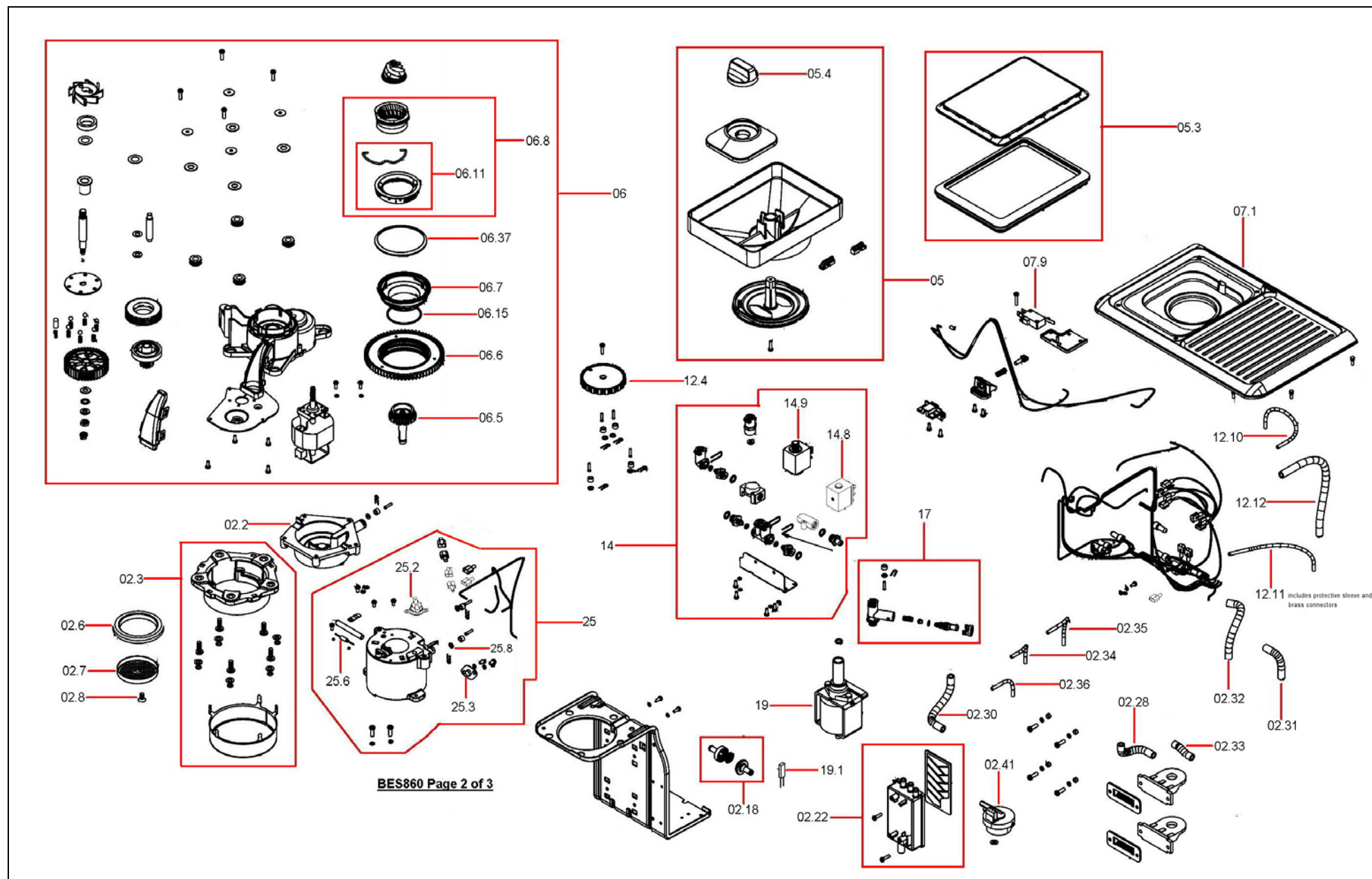
Circuit Diagram Page 2 of 3  
3.2 (Left PCB – Grinder)



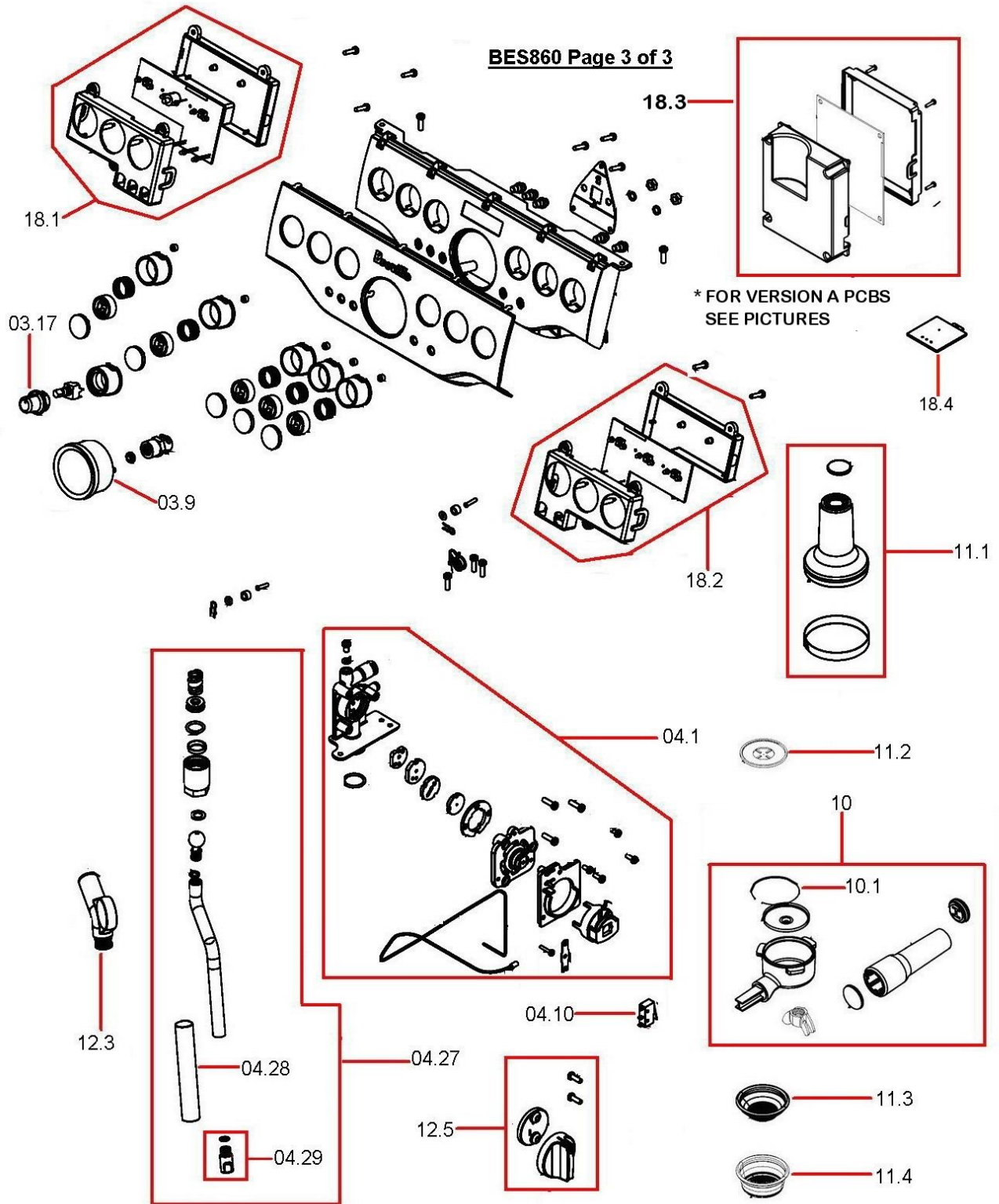
Circuit Diagram Page 3 of 3  
3.3 (Right PCB – Coffee Dose)





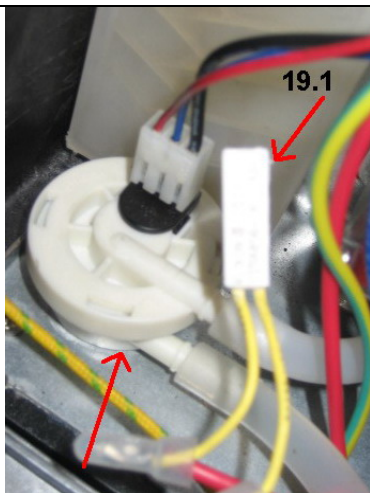




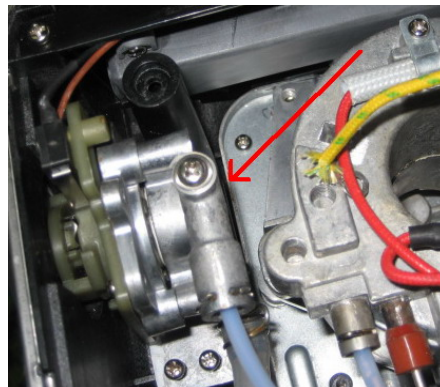


## 5.0 Pictures – NOT SORTED

/A /B VERSION SHOWN AT END OF PICTURES



02.41 & 19.1



04.1



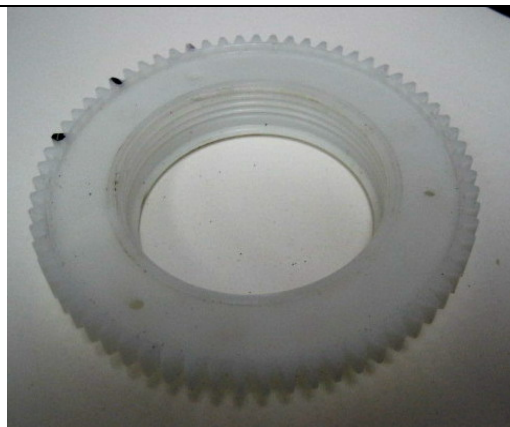
05



06



06.5



06.6



06.7



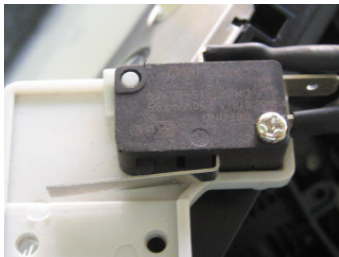
06.8



06.11



06.15



07.9



08.9



08.12



08.13





08.15



09.1



09.6



10



11.1



11.2





11.3



11.31



11.4

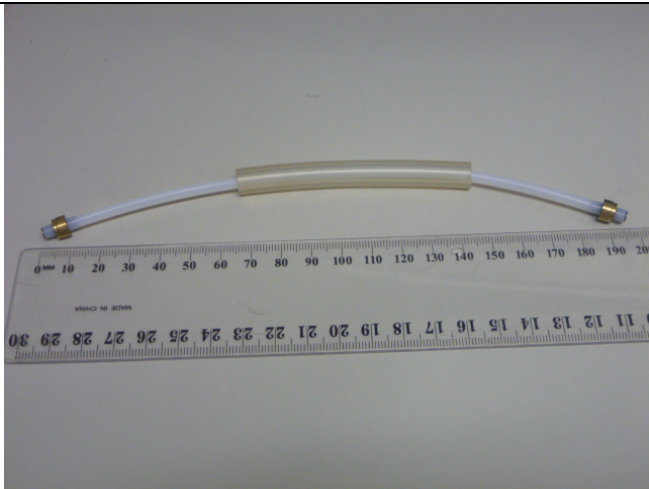


11.41



11.9





**12.11**



**12.4**

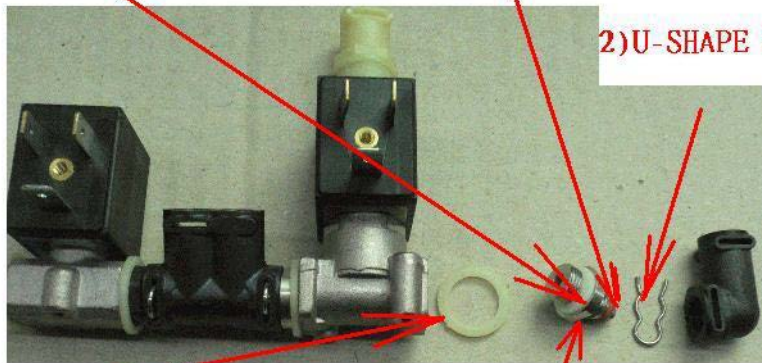


**14**

4) solenoid Valve Seal

3) HOSE CONNECTOR O-RING

2) U-SHAPE CLIP



5) Solenoid  
Valve Washer

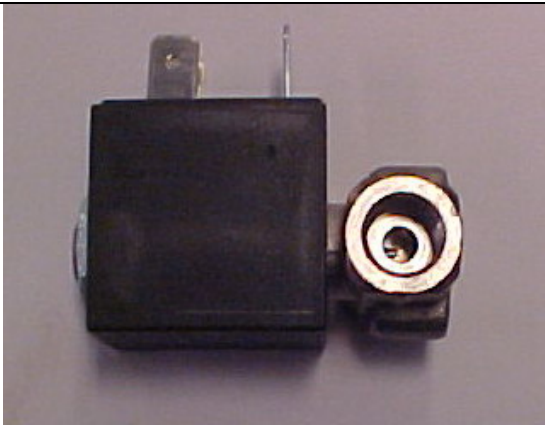
1) SS Solenoid Valve connector

**BES860/14.77 SOLENOID VALVE CONNECTOR KIT**

Consists of one of each of the above arrowed parts.

The BES860/14 Solenoid valve assy may not be needed  
if the repair can be completed using this kit.

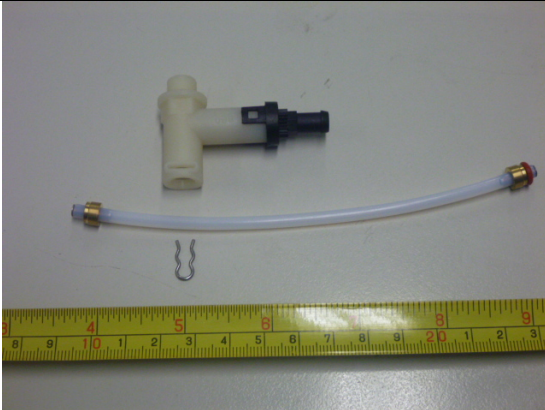




14.8



14.9



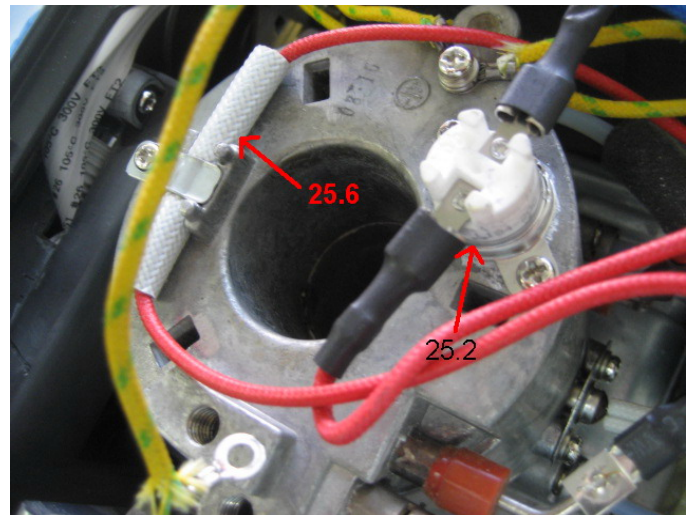
17



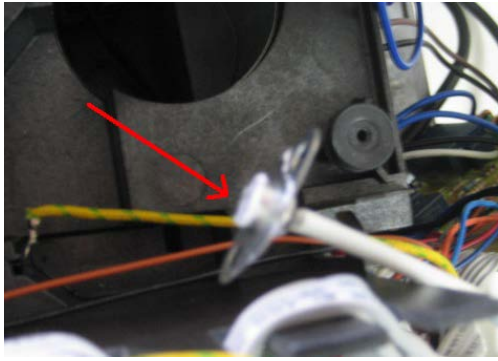
18.3



02.22 & 19



25.2 & 25.6



25.3



25



89 – Cleaning Kit




03.9



BES860/01.15 BASE COVER

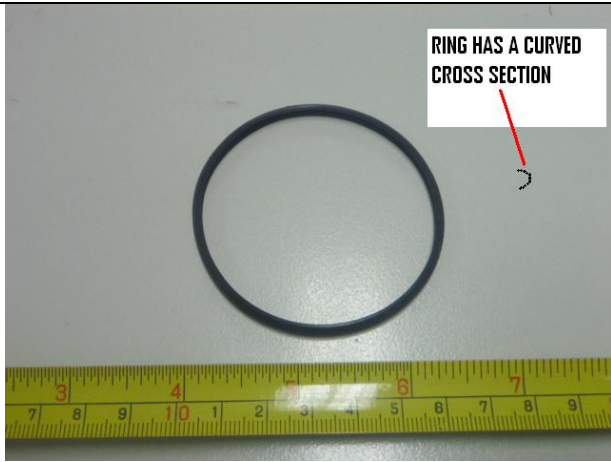


 <p><b>BES860/02.41 FLOW METER</b></p>	
--	--

**/A VERSION PICTURES**

**PRODUCTION DATE CODE OF CHANGE: BES860 - 1033**

 <p><b>01.9A</b></p>	 <p><b>04.10A</b></p>
 <p><b>04.27A</b></p>	 <p><b>04.29A</b></p>



**06.37A**



**06.5A**



**06.6A**



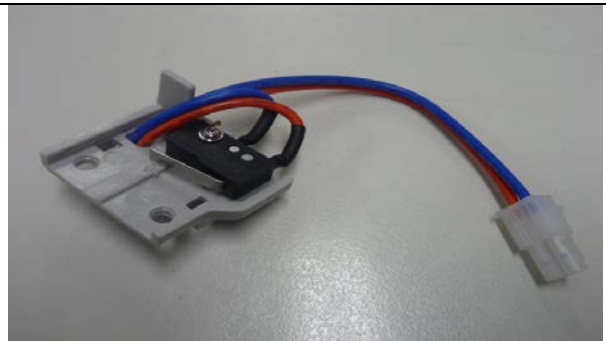
**06.7A**



**06A**



**07.1A**



**07.9A**



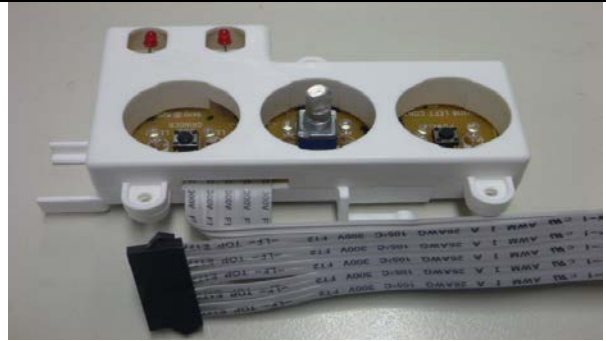
**10.1A**



**10A**



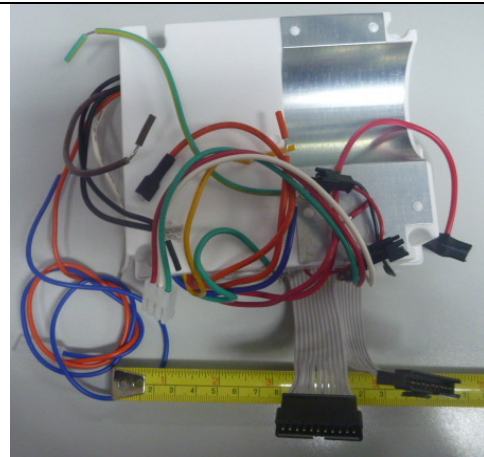
**11.82A**



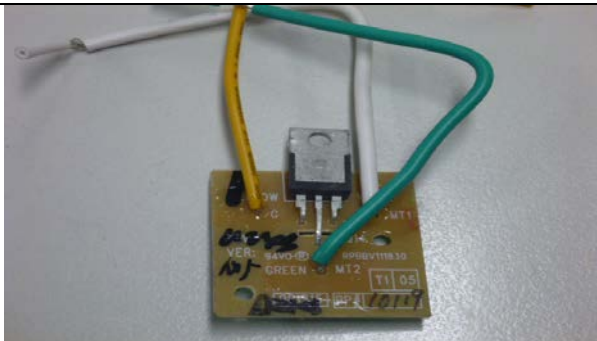
**18.1A**



**18.2A**



**18.3A**

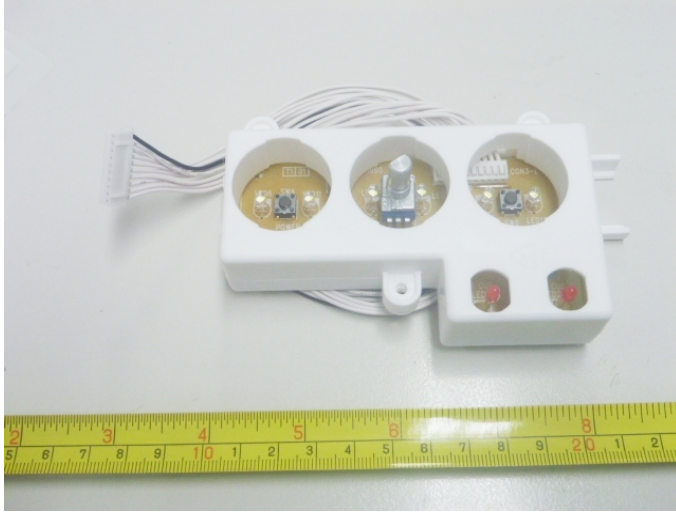


**18.4A**

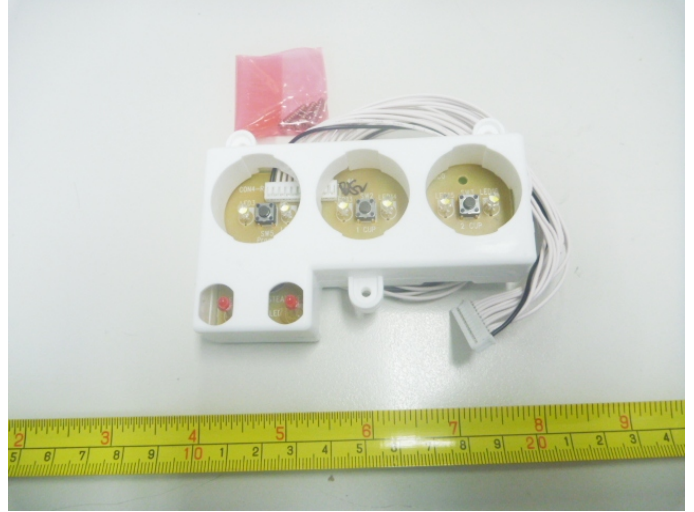


**25.3A**

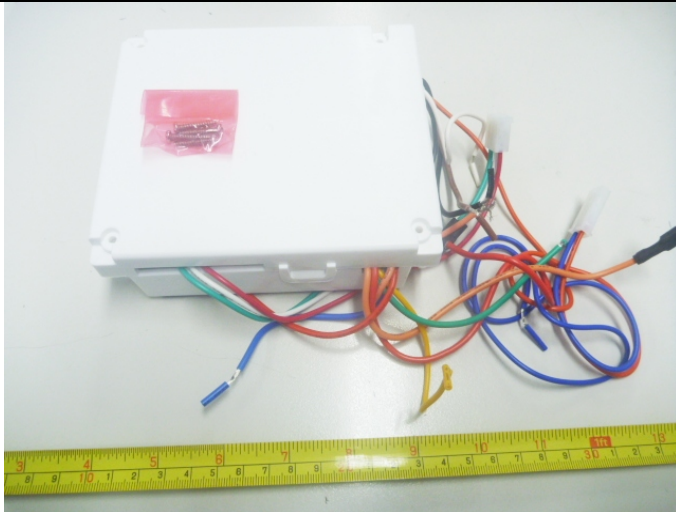




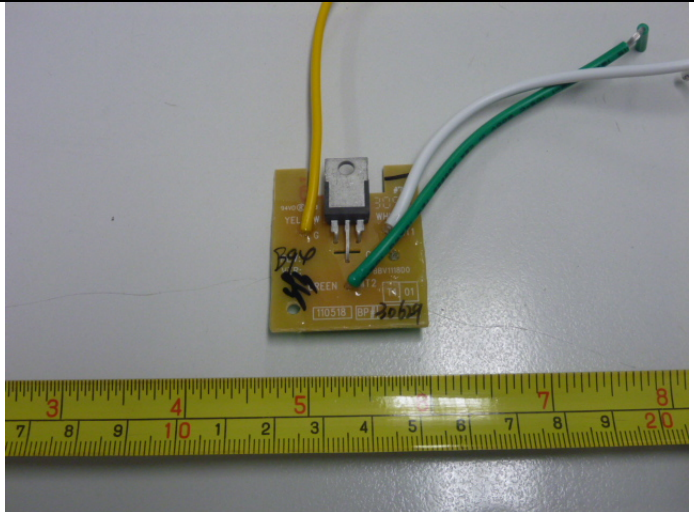
**18.1B with on-board connectors**



**18.2B with on-board connectors**



**18.3B with on-board connectors**



**18.4B**