

Renesas Starter Kit RSK R8C/13 Tutorial Manual

RENESAS SINGLE-CHIP MICROCOMPUTER

Table of Contents

TChapter 1. Preface.....	1
Chapter 2. Introduction.....	2
Chapter 3. Tutorial Project Workspace	3
Chapter 4. Project Workspace	4
4.1. Introduction.....	4
4.2. Creating a new Project Workspace	4
4.3. Build Configurations and Debug Sessions	5
4.3.1. Build Configuration	5
4.3.2. Debug Session.....	5
Chapter 5. Building the Tutorial Project	6
5.1. Building Code	6
5.2. Connecting the debugger	7
5.3. Connecting to the target with the E8	7
Chapter 6. Downloading and Running the Tutorial	9
Chapter 7. Project Files.....	14
7.1. Standard Project Files	14
7.1.1. Initialisation code (resetprg.c / resetprg.h)	14
7.1.2. Board initialisation code (hwsetup.c / hwsetup.h).....	15
7.1.3. Main tutorial code (main.c / main.h).....	16
Chapter 8. Additional Information.....	17

Chapter 1. Preface

Cautions

This document may be, wholly or partially, subject to change without notice.

All rights reserved. Duplication of this document, either in whole or part is prohibited without the written permission of Renesas Technology Europe Limited.

Trademarks

All brand or product names used in this manual are trademarks or registered trademarks of their respective companies or organisations.

Copyright

© Renesas Technology Europe Ltd. 2006. All rights reserved.

© Renesas Technology Corporation. 2006. All rights reserved.

Renesas Europe Website: <http://eu.renesas.com/>

Glossary

CPU	Central Processing Unit	RSK	Renesas Starter Kit
HEW	High-performance Embedded Workshop	MCU	Microcontroller
LED	Light Emitting Diode	LCD	Liquid Crystal Display
PC	Program Counter	PCB	Printed Circuit Board

Chapter 2. Introduction

This manual is designed to answer, in tutorial form, the most common questions asked about using the Renesas Starter Kit (RSK): The tutorials help explain the following:

- How do I compile, link, download, and run a simple program on the RSK?
- How do I build an embedded application?
- How do I use Renesas development tools?

The project generator will create a tutorial project with two selectable build configurations

- 'Debug' is a project built with the debugger support included.
- 'Release' build demonstrating code suitable for release in a product.

Files referred to in this manual are installed using the project generator as you work through the tutorials. The tutorial examples in this manual assume that installation procedures described in the RSK Quick Start Guide have been completed.

Please refer to the Quick Start Guide for details of installation and configuration of the RSK.

NOTE: These tutorials are designed to show you how to use the RSK and are not intended as a comprehensive introduction to the High-performance Embedded Workshop (HEW) debugger, the compiler tool-chains or the E8 Emulator – please consult the relevant user manuals for more in-depth information.

Chapter 3. Tutorial Project Workspace

The workspace includes all of the files for two build configurations. The tutorial code is common to both the Debug and the Release build configurations. The tutorial is designed to show how code can be written, debugged then downloaded in a 'Release' situation.

The build configuration menu in High-performance Embedded Workshop (HEW) allows the project to be configured such that certain files may be excluded from each of the build configurations. This allows the inclusion of the debug monitor within the Debug build, and its exclusion in the Release build. Contents of common C files are controlled with defines set up in the build configuration options and `#ifdef` statements within the same files.

Maintaining only one set of project files means that projects are more controllable.

Chapter 4. Project Workspace

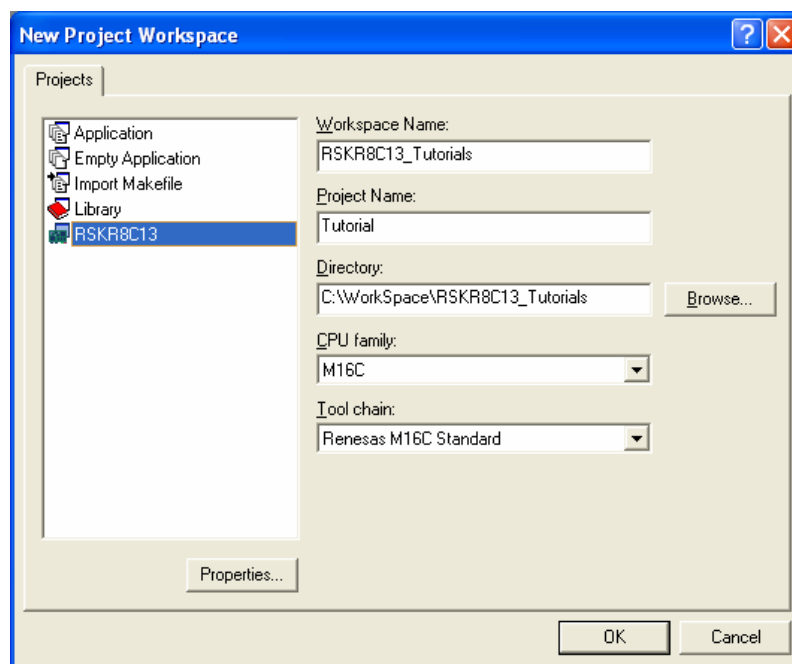
4.1. Introduction

High-performance Embedded Workshop (HEW) is an integrated development tool that allows the user to write, compile, program and debug a software project on any of the Renesas Microcontrollers. HEW will have been installed during the installation of the software support for the RSK product. This manual will describe the stages required to create and debug the supplied tutorial code.

4.2. Creating a new Project Workspace

Start HEW from the Windows Start Menu, Start | All Programs | Renesas | High-Performance Embedded Workshop

Open a new tutorial workspace from the [File -> New Workspace...] menu or select 'Create a new project workspace' when presented with the 'Welcome!' dialog.



The example above shows the New Project Workspace dialog with the RSKR8C13 selected.

- Select the M16C CPU family and "Renesas M16C Standard" Toolchain (R8C is supported by the same compiler as M16C).
- Select the "RSKR8C13" Project type from the left-hand Projects list.
- Enter a Workspace Name; all your files will be stored within a folder called c:\WorkSpace\<your_name>
- The project name field will be pre-filled to match the workspace name above; you can change this name if you wish.

Note: HEW allows you to add multiple projects to a workspace. You may add the sample code projects later so you may wish to choose a suitable name for the Tutorial project now.

- Click <OK> to start the RSK Project Generator wizard.

The next dialog presents the three types of example project available:

1. Tutorial: This is the one of interest at this time; the code is explained later in this manual.
2. Sample code: this provides examples for using various peripherals. If you select this and click <Next> it will open a new dialog allowing the selection of many code examples for the peripheral modules of the device.
3. Application: where the debugger is configured but there is no program code. This project is suitable for the user to add code without having to configure the debugger.

- Select "Tutorial" as the type of project to generate and then click <Next>.
- Click <Finish> to create the project

The project generator wizard will display a confirmation dialog. Press <OK> to create the project and insert the necessary files.

A tree showing all the files in this project will appear in HEW.

- To view the file 'main.c', double click on the file in the Workspace window, 'main.c' will appear in the code display.

4.3. Build Configurations and Debug Sessions

The workspace that has been created contains two build configurations and two debug sessions. The Build Configuration allows the same project to be built but with different compiler options. The options available to the user are fully described in the HEW User's Manual.

4.3.1. Build Configuration

The build configurations are selected from the left hand drop down list on the tool bar. The options available are Debug and Release. The debug build is configured for use with the debugger. The Release build is configured for final ROM-able code.

A common difference between the two builds may be the optimisation settings. With Optimisation turned on the Debugger may seem to execute code in an unexpected order. To assist in debugging it is often helpful to turn optimisation off on the code being debugged.

- Select the 'Debug Build' Configuration.



4.3.2. Debug Session

The debug sessions are selected from the right hand drop down list on the tool bar. The options vary between RSK types however one will always start Debug and include the type of debug interface, the alternate selection is the 'DefaultSession'. The purpose of the debug sessions is to allow the use of different debugger tools or different debugger settings on the same project.

- Select the 'SessionR8C_E8_System' debug session.



Chapter 5. Building the Tutorial Project

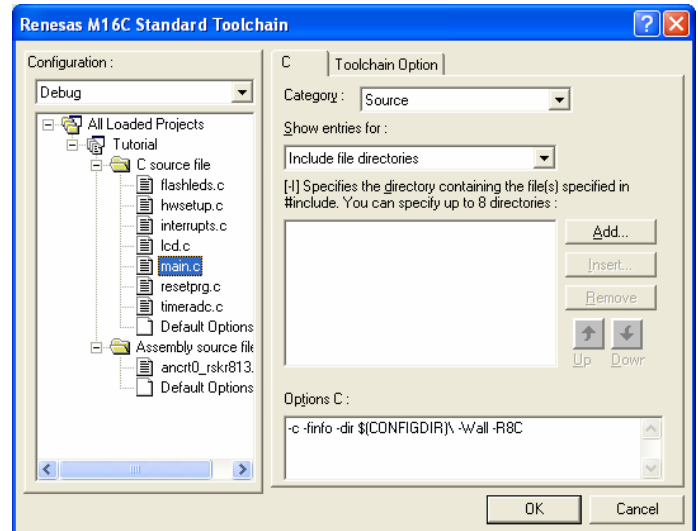
The tutorial project build settings have been pre-configured in the tool-chain options. To view the tool chain options select the 'Build' Menu item and the relevant tool-chain. This should be the first option(s) on the drop down menu.

The dialog that is displayed will be specific to the tool-chain selected.

The configuration pane on the left hand side will exist on all the tool-chain options. It is important when changing any setting to be aware of the current configuration that is being modified. If you wish to modify multiple or all build configurations this is possible by selecting 'All' or 'Multiple' from the 'Configuration' drop down list.

- Review the options on each of the tabs and 'Category' drop down lists to be aware of the options available.

Note: For the purposes of the tutorial, leave all options at default.



When complete close the dialog box by clicking <OK>.

5.1. Building Code

There is a choice of three shortcuts available for building the project.

1. Selecting the 'Build All' tool bar button.

This will build everything in the project that has not been excluded from the build. This includes the standard library.

2. Selecting the 'Build' tool bar button.

This will build all files that have changed since the last build. The standard library will not be built unless an option has been changed.

3. Pressing <F7>

This is equivalent to pressing the 'Build' button described above.

- Build the project now by pressing <F7> or pressing one of the build icons as shown above.
During the build each stage will be reported in the Output Window.
The build will complete with an indication of any errors and warnings encountered during the build.

5.2. Connecting the debugger


For this tutorial it is not necessary to provide an external power supply to the board. The power will be obtained from the USB port. Please be aware that if you have too many devices connected to your USB port it may be shut down by windows. If this happens remove some devices and try again. Alternatively provide an external power source taking care to ensure the correct polarity and voltage.

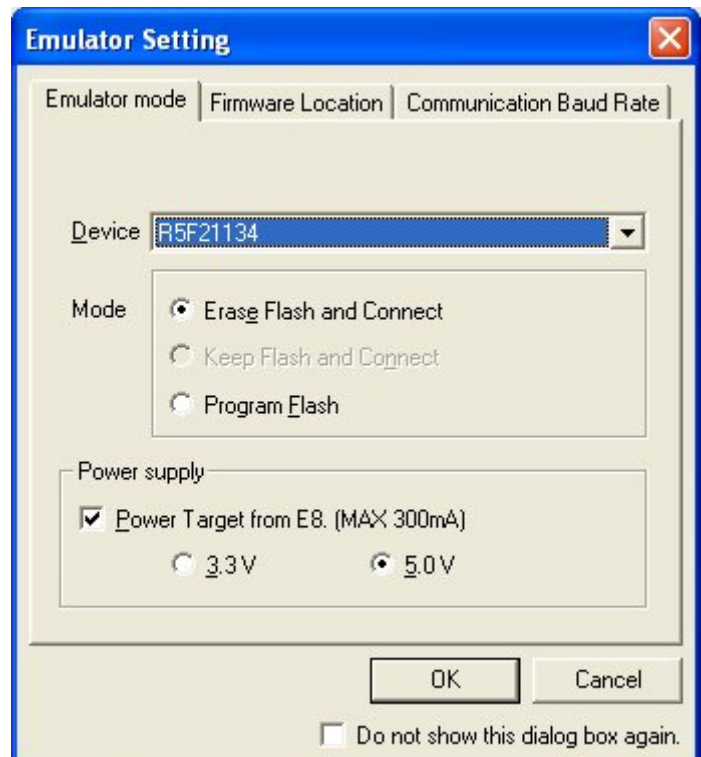
The Quick Start Guide provided with the RSK board gives detailed instructions on how to connect the E8 to the host computer. The following assumes that the steps in the Quick Start Guide have been followed and the E8 drivers have been installed.

- Fit the LCD module to J8 on the RSK ensuring that pin 1 on the module corresponds to the indication on the RSK PCB.
- Connect the E8 debugger to the USB port on your computer.
- Connect the E8 Debugger to the target hardware ensuring that it is plugged into the connector marked J6/E8 which is nearest the power connector.
- If supplying external power to the board this can be turned on now.

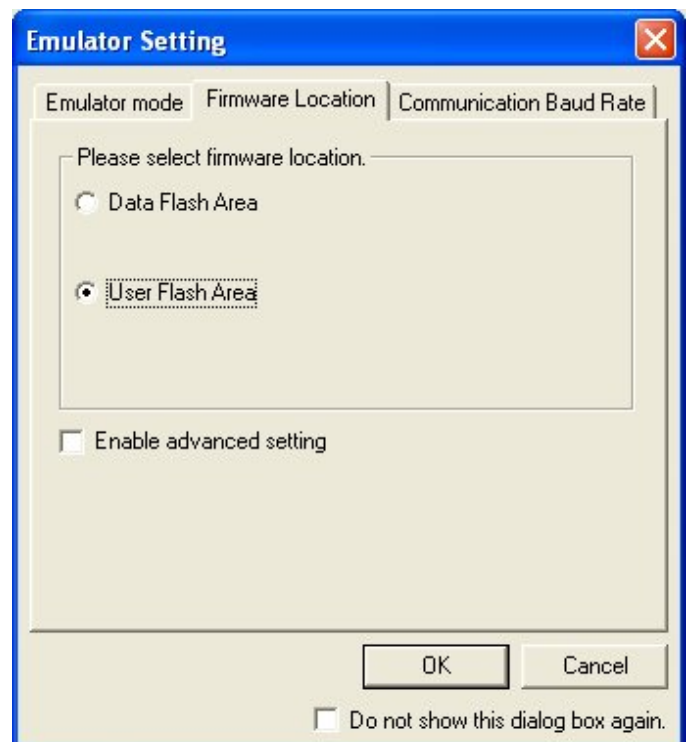
5.3. Connecting to the target with the E8

This section will take you through the process of connecting to the device, programming the Flash and executing the code.

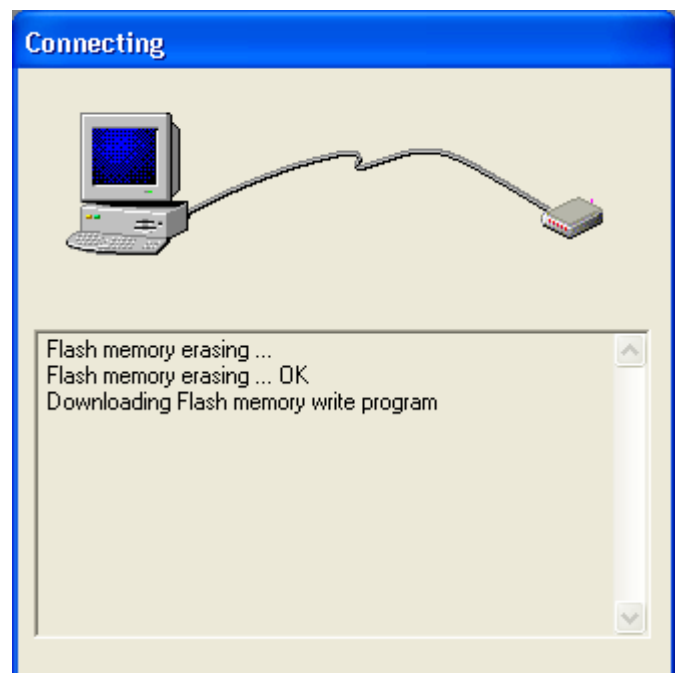
- Select the 'SessionR8C_E8_System' debug session.
- Click the <Connect> button  on the debug toolbar
- The "Emulator Setting" dialog will be shown.
Note: If this is the first time you have connected with the current HEW project you will be shown a "Wizard" version of this dialog, use the settings as described here.
- Select the correct device type (e.g. R5F21134 for RSKR8C13).
- Select "Download emulator firmware".
- If the E8 is to provide power to the RSK board, select "Power Target from E8" and choose the "5.0V" option. Otherwise connect a 5V centre positive supply and switch it on.
- Select the "Firmware Location" tab.



- Select "User Flash Area" for firmware location and clear the "Enable advanced setting" checkbox.
- Click <OK>.



- The Flash Memory write program will be downloaded to the target.
 - The Output window in HEW will show 'Connected'
- Note: The connection to the target will activate the debugger buttons on the HEW toolbar.



Now is a good time to save the HEW session.

- Select 'File' | 'Save Session'.

If you have changed any workspace settings now is a good time to save the workspace.

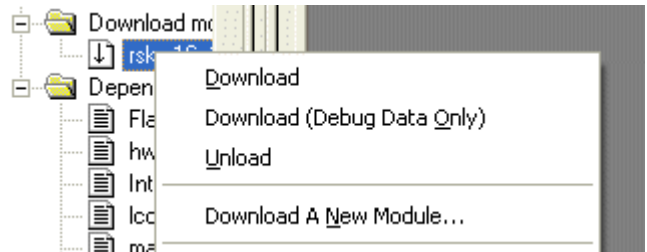
- Select 'File' | 'Save Workspace'.

Chapter 6. Downloading and Running the Tutorial

Once the code has been built in HEW it needs to be downloaded to the RSK itself.

There will now be an additional category in the workspace view for 'Download Modules'

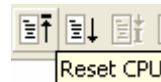
- Right click on the download module listed and select 'Download'
- Note: The output display will show "Flash memory write end" to confirm the completion of the download.



On completion of the download the debugger is ready for the code to be executed.

To start debugging it is necessary to reset the debugger and target.

- Press 'Reset CPU' on the Debug Tool Bar.



The File window should open the Tutorial code at the entry point. An arrow marks the current position of the program counter.

```
.endm
;=====
; Interrupt section start
;=====
.insf start,S,0
.glob start
.section interrupt
start:
;=====
; after reset,this program will start
;=====
-> ldc #istack_top,    isp ;set istack pointer
mov.b #02h,0ah
mov.b #00h,04h        ;set processor mode
mov.b #00h,0ah
ldc #0080h, flg
ldc #stack_top, sp    ;set stack pointer
ldc #data_SE_top, sb  ;set sb register
ldintb #VECTOR_ADR
;=====
; NEAR area initialize.
```

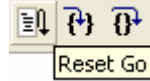
We will now skip over the initialisation code and proceed to the main tutorial.

- Open the file called 'resetprg.c'.

- Place a breakpoint at the call to `main()` ;

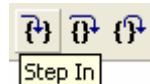
Breakpoints can be set by double clicking in the grey column containing the PC arrow next to the line to break at; or selecting the line and pressing F9; or right click on the line and select 'Toggle breakpoint'. Alternatively set an eventpoint, by clicking in the column to the left of the breakpoint column. Up to 2 eventpoints can be set. Eventpoints do not require programming the flash memory and so are faster to use.

- Press 'Reset Go' on the Debug Tool Bar.



The code will execute to the breakpoint. At this point all the device initialisation will have been completed.

- Press 'Step In' on the Debug Tool Bar.



The code window will open 'main.c' and show the new position of the program counter.

```

/*****
Function Name:  Main
Description:    Main function
Parameters:     none
Return value:   none
*****/
void main(void)
{
/* Reset the LCD module */
➡  InitialiseDisplay();

/* Display Renesas Splash Screen */
  DisplayString(LCD_LINE1,"Renesas");
  DisplayString(LCD_LINE2,NICKNAME);

/* Flash the user LEDs for some time or until a key is pressed. */
  FlashLEDs();

/* Flash the user LEDs at a rate set by the user potentiometer (ADC) using
interrupts. */
  TimerADC();

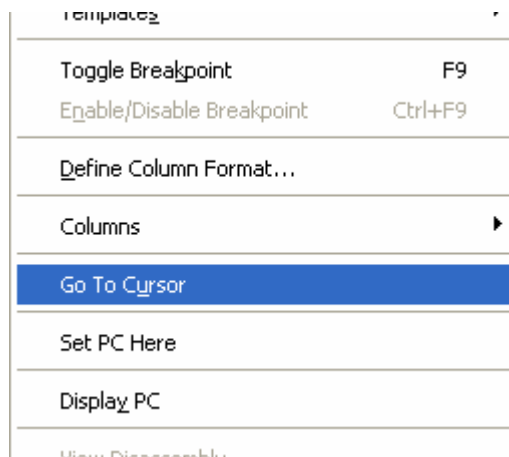
/* Demonstration of initialised variables. Use this function with the debugger. */
  Statics_Test();

/* End of the user program. This function must not exit. */
  for(;;);
}
/*****
End of function main
*****/

```

- Insert a breakpoint on the call to the `TimerADC` function.

- Right click on the `FlashLEDs () ;` function and select 'Go To Cursor' as illustrated.



The code will execute to the selected line and stop. An automatic breakpoint was inserted in the code and then removed after calling the break.

- Press 'Step Over' on the Debug Tool Bar.



The code will run and flash the LEDs 200 times. The debugger will not exit until all 200 flashes have completed or a button is pressed on the RSK.

- To stop the LEDs flashing press the SW1 button on the RSK to exit the `flashLEDs ()` function.

The code will run to the breakpoint we previously set on the `TimerADC` function, note that the yellow PC arrow will now be superimposed on the breakpoint indicator, this confirms the breakpoint has been reached.

The `TimerADC` function initialises an interrupt on an available internal timer. On a compare match in the timer module, an interrupt is generated. In the `TimerADC` code version the interrupt reads the last ADC conversion from the external potentiometer and uses the result to set the next compare match value. The ADC conversion is then re-started.

The interrupt initialisation is completed as part of the hardware setup. This is contained in the file 'interrupts.c'.

- Open the file 'interrupts.c' by double clicking on the file in the workspace view.
- Review this file and find the interrupt function that changes the LED pins; `TimerXHandler(void)`.
- Set a breakpoint on the line where the LED pins are modified.
- Press <Go> or <F5> to run the code from the current PC position.



The code will stop in the interrupt routine. It is now possible to step through the interrupt function.

- Remove the breakpoint in the interrupt by double clicking again before exiting the function.
- Press <Go> to run the code from the current PC position.

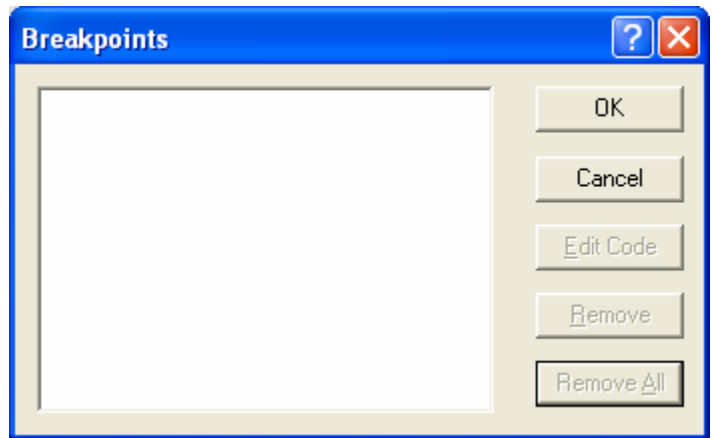


The code will now run to the infinite loop at the end of Main. The user LEDs will now be flashing. You can modify the flashing rate by adjusting the potentiometer on the RSK.

- Press <Stop> on the debug tool bar.



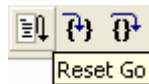
- Press 'CTRL-B' to open the breakpoint window.
- Press <Remove All>.
- Press <OK>.



- Open the file 'main.c'
- Insert a breakpoint on `StaticsTest()` ;.

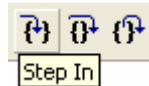
The statics test is used to demonstrate that the initialisation has successfully copied all initialised variables from storage in flash to RAM.

- Press <Reset Go> on the Debug Tool Bar.



The code will stop at the breakpoint. (Press one of the RSK buttons to bypass the flashing LED test.)

- Press <Step In> on the Debug Tool Bar.



It is possible to monitor variables during debugging of the code. To set up a 'watch' on a variable place the mouse over the variable. If the variable is available in the current context a tooltip will be displayed with the current value of the variable.

- Hover the mouse over the 'ucStr' variable and its value will appear as a tooltip. Now right click on the variable name and select 'Instant Watch'.

A dialog will open showing the variable and allowing further details to be explored.

- Press <Add>

The dialog will close and a new pane will open in the workspace containing the variable.

It is possible to see that the string has been successfully initialised to ' STATIC '.

- Set a breakpoint on the call to `DisplayString()` ; inside the `for` loop.
- Press 'Go' to run the code from the current PC position.



When the program stops you can see the modified string displayed on the second line of the LCD.

Inspection of the watch pane will show that the first character of the variable string has been replaced with the first character of the constant replacement string.

- Remove the breakpoint
- Right click on the '`DisplayString();`' function call after the loop and select 'Go to cursor'.

This shows that the variable was initialised at program start up and can be overwritten with 'TESTTEST'.

You have now run the tutorial code and used many of the common features of the debugger. We suggest that you review the rest of the tutorial code as many functions have important information on the operation of the code, the compiler directives and comments on when they should or must be used. Please refer to Chapter 7 for more information on the project files.

Chapter 7. Project Files

7.1. Standard Project Files

The RSK tutorials are configured so that it is possible to provide the same tutorial code on multiple RSK products. This allows the evaluation of the different processor cores using equivalent code. To achieve this, the following files are common between all device cores and Toolchains.

Each of the tutorial files has detailed comment text describing the function of each code entry. Please refer to the source code for greater detail on the purpose and operation of the compiler specific details.

7.1.1. Initialisation code (resetprg.c / resetprg.h)

This is the entry point of the main tutorial code.

```
void Initialise(void)
{
    /* Initialise all the required peripheral modules */
    HardwareSetup();

    /* main function including users code */
    main();

    /* This function must never exit */
    for(;;);
}
```

Initialisation of the variables used in the C compilers and initialisation of stack pointers are completed in the ncr0.a30 file for the M16C compiler, this file in turn calls `Intialise()`;

The call to `hardwaresetup()` will initialise the device hardware and peripherals ready for the tutorial software.

The call to `main()` will start the main demonstration code.

7.1.2. Board initialisation code (hwsetup.c / hwsetup.h)

There are four common stages to the configuration of the microcontroller device. The code to demonstrate this is therefore split into four functions. Each function is written specifically for the device supported. The function calls are shown below.

```

/*****
Function Name:  HardwareSetup
Description:    Sets up hardware
Parameters: none
Return value: none
*****/

void HardwareSetup(void)
{
    ConfigureOperatingFrequency();

    ConfigurePortPins();

    EnablePeripheralModules();

    ConfigureInterrupts();
}

/*****
End of function HardwareSetup
*****/
```

7.1.3. Main tutorial code (main.c / main.h)

The main tutorial code is common to all tutorial projects. The display initialisation and string display functions operate on the LCD display module. Check compatibility with ks0066u controller and pin connection on the schematic before connecting an LCD module not supplied by Renesas.

```

/*****
Function Name:   Main
Description:     Main function
Parameters:     none
Return value:    none
*****/
void main(void)
{
    /* Reset the LCD module */
    InitialiseDisplay();

    /* Display Renesas Splash Screen */
    DisplayString(LCD_LINE1, "Renesas");
    DisplayString(LCD_LINE2, NICKNAME);

    /* Flash the user LEDs for some time or until a key is pressed. */
    FlashLEDs();

    /* Flash the user LEDs at a rate set by the user potentiometer (ADC) using
    interrupts. */
    TimerADC();

    /* Demonstration of initialised variables. Use this function with the debugger. */
    Statics_Test();

    /* End of the user program. This function must not exit. */
    for(;;);
}
/*****
End of function main
*****/
```

Chapter 8. Additional Information

For details on how to use High-performance Embedded Workshop (HEW), refer to the HEW manual available on the CD or from the web site.

Further information available for this product can be found on the Renesas website at: www.renesas.com/renesas_starter_kits

General information on Renesas Microcontrollers can be found at the following websites.

Global: <http://www.renesas.com/>

Regional (English language) sites can be accessed from the Global site, or directly by going to:

Europe: <http://eu.renesas.com>

Americas: <http://america.renesas.com>

Asia: <http://sg.renesas.com>

Note on Autoupdate: The Autoupdater is configured to automatically add itself to the Startup folder in the Windows Start Menu and use the registry defaults for access to the web. After restarting the machine the Icon will appear in the System Tray next to the clock. To change the settings or access Autoupdate simply right-click on the icon and use the menu that appears.

Renesas Starter Kit RSKR8C13

Tutorial Manual

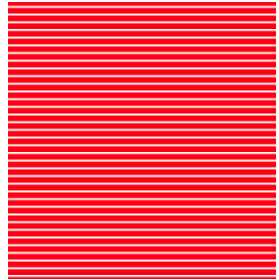
Publication Date Rev.3.00 15.JAN.2007

Published by: Renesas Technology Europe Ltd.

Dukes Meadow, Millboard Road, Bourne End, Buckinghamshire, SL8 5FH, UK

©2006 Renesas Technology Europe and Renesas Solutions Corp., All Rights Reserved.

Renesas Starter Kit for R8C/13 Tutorial Manual



Renesas Technology Europe Ltd.

Dukes Meadow, Millboard Road, Bourne End, Buckinghamshire, SL8 5FH, UK